


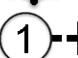


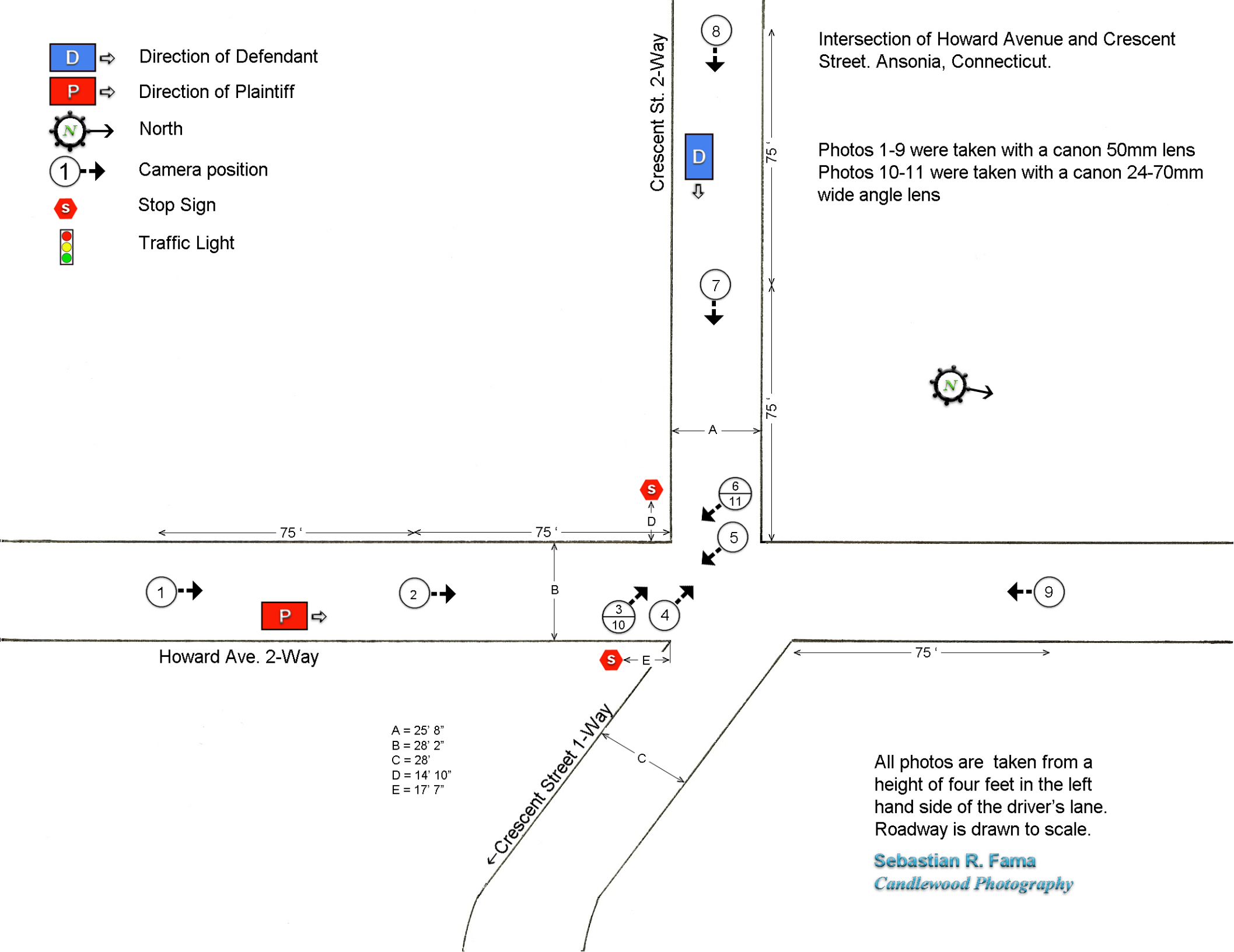


-  Direction of Defendant
-  Direction of Plaintiff
-  North
-  Camera position
-  Stop Sign
-  Traffic Light

Intersection of Howard Avenue and Crescent Street. Ansonia, Connecticut.

Photos 1-9 were taken with a canon 50mm lens
 Photos 10-11 were taken with a canon 24-70mm wide angle lens



A = 25' 8"
 B = 28' 2"
 C = 28'
 D = 14' 10"
 E = 17' 7"

All photos are taken from a height of four feet in the left hand side of the driver's lane. Roadway is drawn to scale.

Sebastian R. Fama
Candlewood Photography